

# Comparison of Traffic Analysis Zones (TAZs) and Census Block Groups (BGs) in a small urbanized area

Bristol Metropolitan Planning  
Organization  
Bristol, Tennessee/Virginia

- ***Census Block Group (BG)***

- 1. contiguous area***
- 2. 600 persons < typical population < 3,000 persons***
- 3. cannot cross state, county, census tract boundaries***
- 4. may not account for terrain***

- ***Traffic Analysis Zone (TAZ)***

- 1. contiguous area***
- 2. typical population < 3,000 persons***
- 3. can cross state, county, census tract boundaries (crossing may create computational anomalies later)***
- 4. affected by terrain and commonality in accessibility***
- 5. strive for homogeneity in land uses as much as possible***



# Downtown Bristol VA

*Moderate-density  
residential*  
BVA043

TRACT 202, BG 4

TRACT 202, BG 3

BVA033

BVA030

*Heavy  
Industrial*

*Municipal*

RR

BVA029

BVA  
037

*Downtown*

VIRGINIA

TENNESSEE

earth



# Downtown Bristol Tenn

VIRGINIA

TENNESSEE

BTN025

TRACT 427.01, BG 3

high-density residential

BTN  
029

Downtown

TRACT 427.01,  
BG 1

BTN017

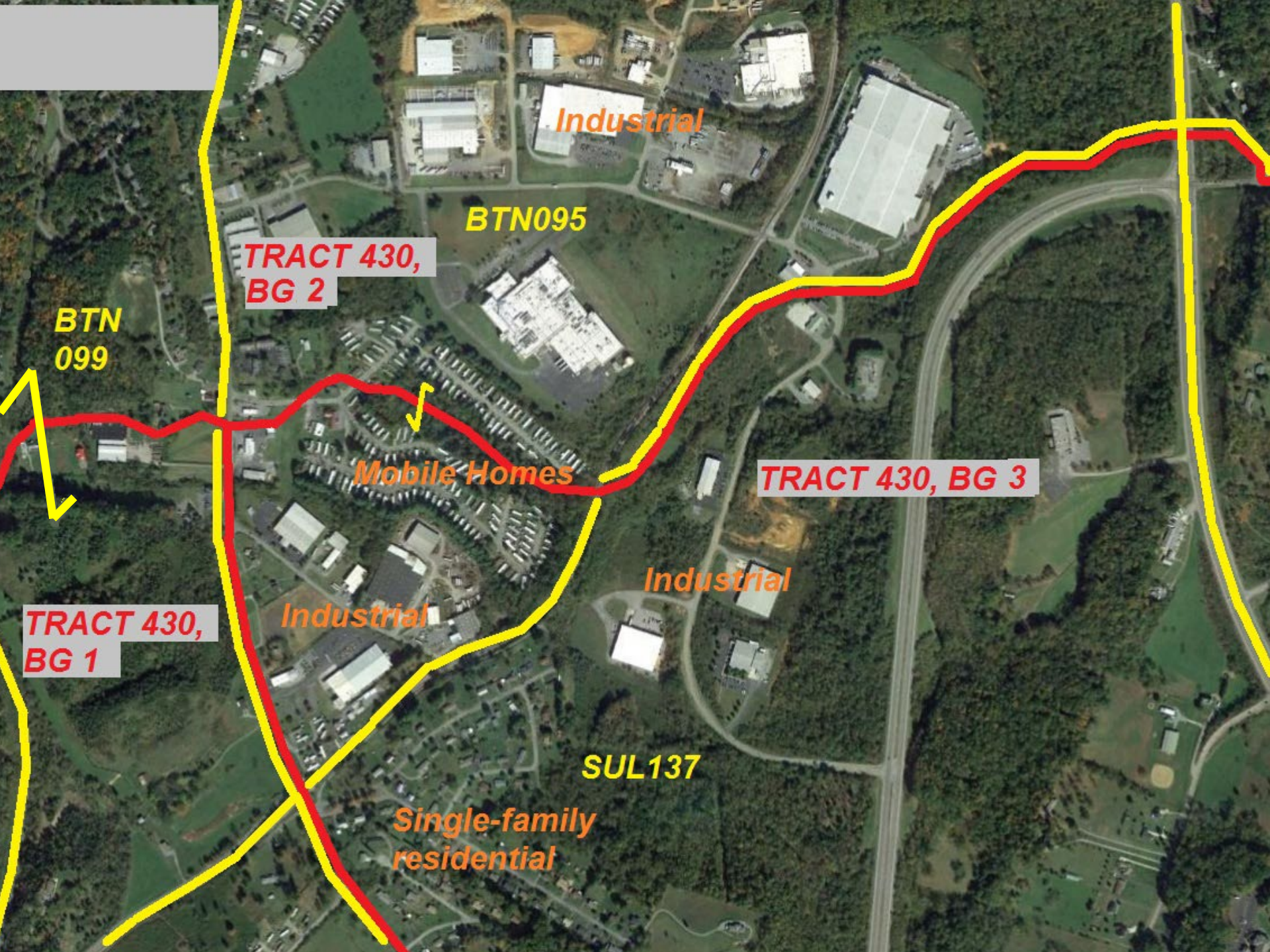
TRACT 427.01, BG 2

mountainous

BTN033

mixed use





Industrial

BTN095

TRACT 430,  
BG 2

BTN  
099

Mobile Homes

TRACT 430, BG 3

TRACT 430,  
BG 1

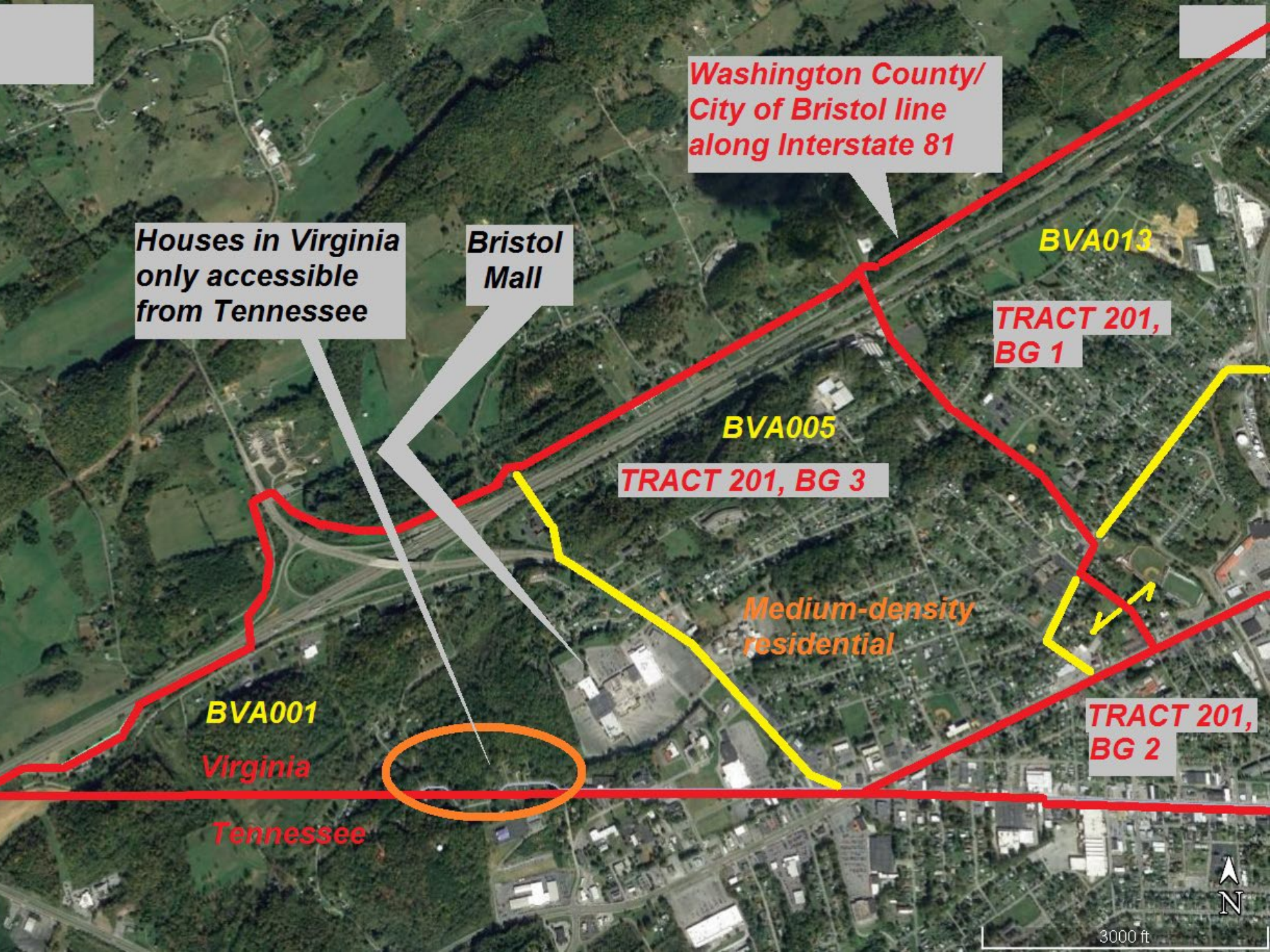
Industrial

Industrial

SUL137

Single-family  
residential





*Washington County/  
City of Bristol line  
along Interstate 81*

*Houses in Virginia  
only accessible  
from Tennessee*

*Bristol  
Mall*

**BVA013**

**TRACT 201,  
BG 1**

**BVA005**

**TRACT 201, BG 3**

*Medium-density  
residential*

**BVA001**

**Virginia**

**Tennessee**

**TRACT 201,  
BG 2**



3000 ft

# Comparison of Traffic Analysis Zones (TAZs) and Census Block Groups (BGs) in a small urbanized area

Bristol Metropolitan Planning  
Organization  
Bristol, Tennessee/Virginia