

# Nashville Regional Model Transition

## TBM to ABM

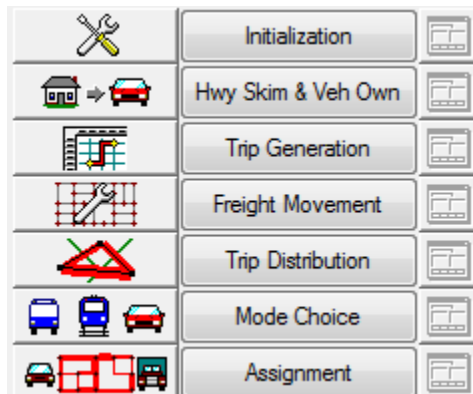
Hary Prawiranata



# TBM vs ABM

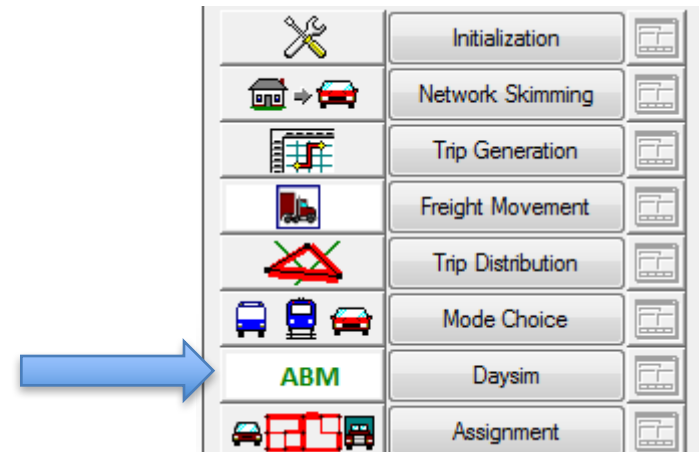
## TBM

- Trips are generated from zonal aggregation of households

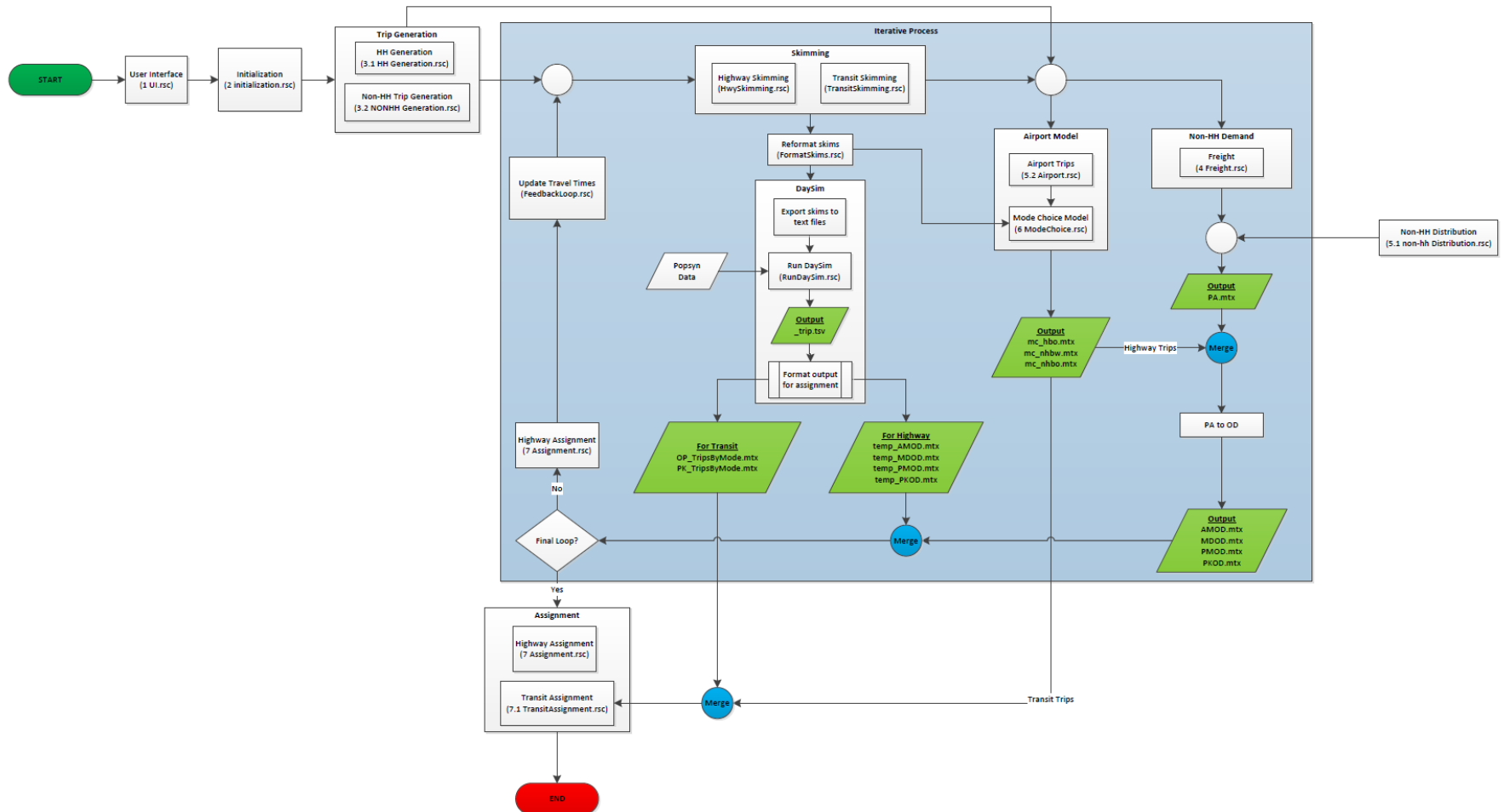


## ABM

- Simulation of individual households and persons (by Daysim)



# Parts of TBM in ABM

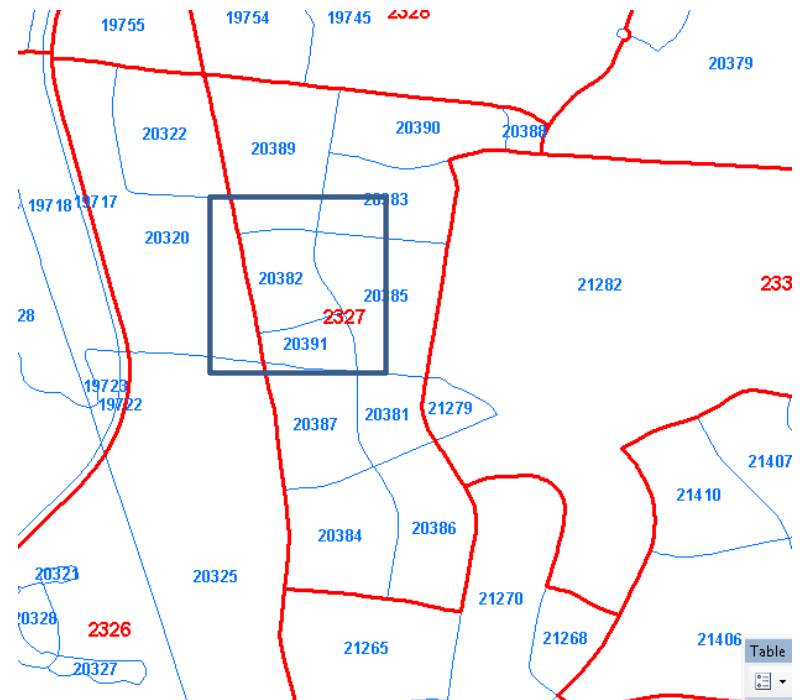


# TAZ to MAZ

- TAZ = 2,817

TAZ 2327	
POP10	500
HH10	181
EMP10	17.33
EMP_ARG	11.02
EMP_MANU	0
EMP_TRANS	0
EMP_RET	0
EMP_OFFICE	6.31
HHSIZE_1	25
HHSIZE_2	58
HHSIZE_3	28
HHSIZE_4PL	46
INCOME_25K	11
INCOME_50K	9
INCOME_75K	22
INCOME_100	35
INCOME_101	80

- MAZ = 33,117



MAZ\_ID = 20382



# MAZ Data

hhno integer	zone_id integer	fraction_with_jobs_outside double precision	hhsz integer	hhvehs integer	hhwks integer	hhftw integer	hhptw integer	hhret integer	hhoad integer	hhuni integer	hhsc integer	hh515 integer	hhcu5 integer	hhincome integer	hownrent integer	hrestype integer	hhparcel integer	hhtaz integer
545519	2326	0	2	2	1	0	1	1	0	0	0	0	0	69995	1	1	20381	2327
545520	2326	0	4	3	2	1	1	0	0	1	0	1	0	157837	1	1	20381	2327
545521	2326	0	2	2	2	1	1	0	0	0	0	0	0	166560	1	1	20382	2327
545522	2326	0	3	3	2	2	0	0	0	0	0	0	1	110555	2	1	20382	2327
545523	2326	0	3	1	2	2	0	0	0	0	0	1	0	107594	1	1	20382	2327
545524	2326	0	1	1	1	1	0	0	0	0	0	0	0	74052	1	1	20382	2327
545525	2326	0	4	2	1	1	0	0	1	0	0	1	1	56265	1	1	20382	2327
545526	2326	0	1	1	1	1	0	0	0	0	0	0	0	45900	1	3	20382	2327
545527	2326	0	5	3	1	1	0	0	1	0	2	1	0	332652	1	1	20382	2327
545528	2326	0	4	3	2	2	0	0	0	0	0	2	0	239372	1	1	20382	2327
545529	2326	0	2	2	0	0	0	2	0	0	0	0	0	70331	1	1	20382	2327
545530	2326	0	4	2	1	1	0	0	1	0	0	2	0	148065	1	1	20382	2327
545531	2326	0	2	2	1	0	1	1	0	0	0	0	0	20660	1	1	20382	2327
545532	2326	0	3	3	2	1	1	0	1	0	0	0	0	177678	1	1	20382	2327
545533	2326	0	3	1	1	1	0	0	0	0	0	2	0	38892	1	1	20382	2327
545534	2326	0	2	2	0	0	0	2	0	0	0	0	0	93556	1	1	20383	2327

MAZ\_ID = 20382 has 13 households

HH\_ID = 545527 has 5 persons, 1 household worker, 1 other adult, 1 full-time, 2 high-schools, 1 age 5-15, and 3 cars



# Details Data

## Person Data

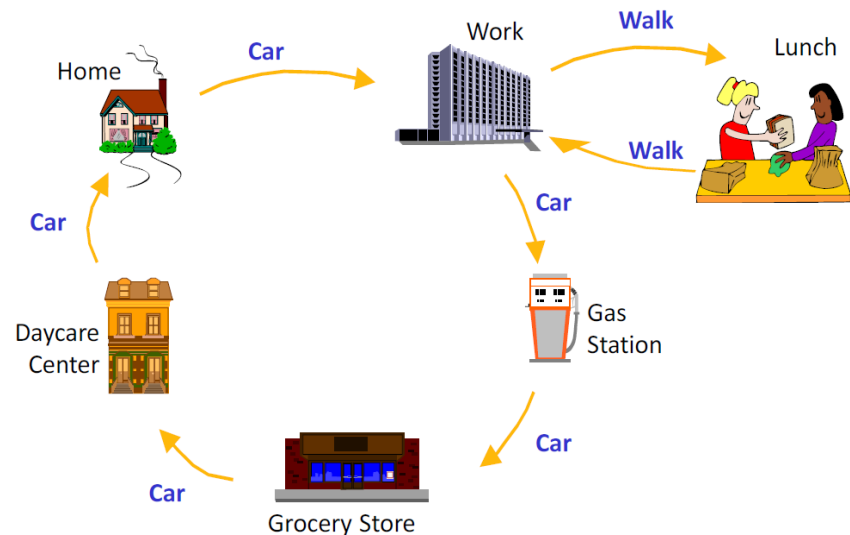
ID	internal daysim record ID	1366856	1366857	1366858	1366859	1366860
HHNO	hh id	545527	545527	545527	545527	545527
PNO	person seq no on file	1	2	3	4	5
PPTYP	person type	1	4	6	6	7
PAGEY	age in years	40	48	16	16	13

## Tour Data

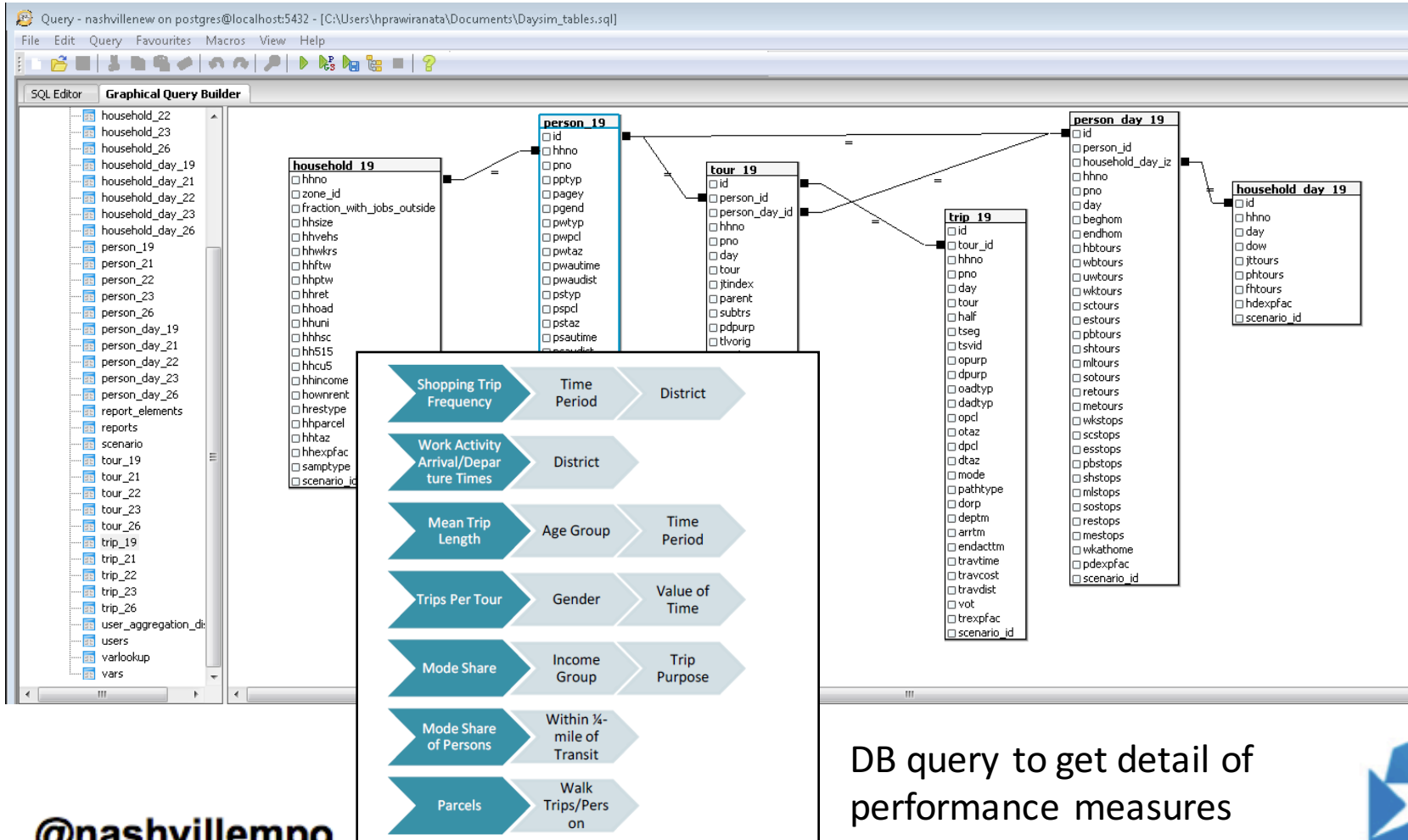
ID		internal day sim record ID									
PERSON_ID		internal day sim record ID	1366901	13668501	13669572	13668571	13668562	13669561			
Person_day_id		internal day sim record ID	1366901	13668508	13669657	13668567	13668566	13668565			
		internal day sim record ID	1366901	13668508	13669657	13668567	13668566	13668565			
HHNO		Household id	\$455\$27	\$455\$27	\$455\$27	\$455\$27	\$455\$27	\$455\$27			
PNO		person seq no on file	5	3	2	2	1	1			
DAY		Day / simulation day ID	1	1	1	1	1	1			
TOUR		tour id	1	1	2	1	1	2			
JTINDEX		hh joint tour index	0	0	0	0	0	0			

## Trips Data

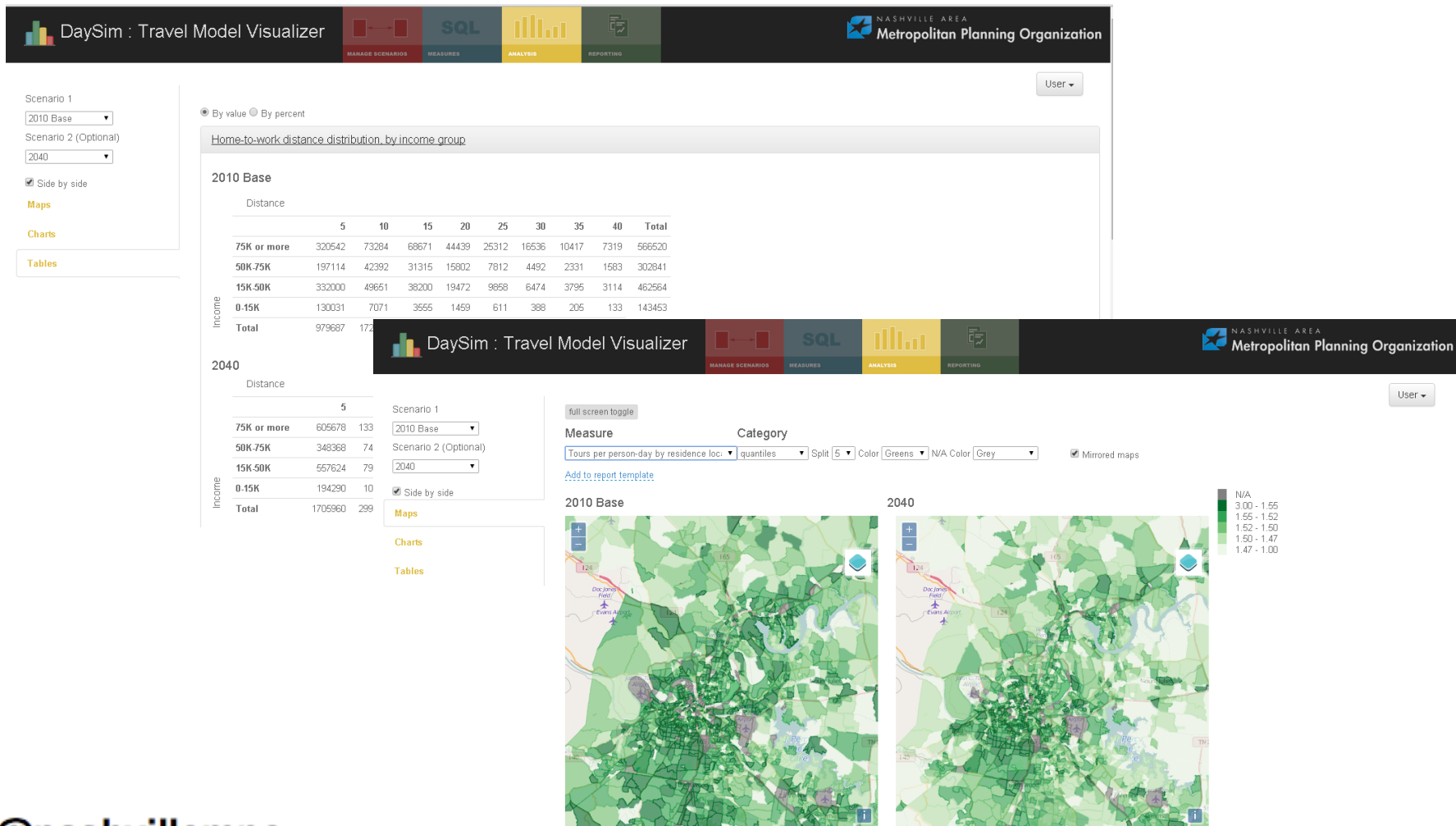
DIARY	TORAP	ID	internal day/sim record ID		1366856101	1366856101		
PROXY	TOADI	TOUR_ID	internal day/sim record ID		13668561	13668561		
PSEXPAC	TOPCL	HINNO	Household ID		545527	545527		
	TDIAZ	PNO	person seq no on file		1			
	TDPCCL	DAY	Diary / simulation day ID		1	1	1	1
	TDIAZ	TOUR	tour id		1	1	2	2
	TMOD	HALF	tour half		1	2	1	2
	TPATH	TSEG	trip segment no within half tour		1	1	1	1
	TAUTC	TSEVID	original survey trip id no.		0	0	0	0
	TAUTC	QPURP	trip origin purpose		0	1	0	6
	TRIPSP	DPURP	trip dest purpose		1	0	6	0
	TRIPSP	QADTYP	trip origin address type		1	2	1	4
	PHNTIN	DADTYP	trip destination address type		2	1	4	1
	PHNTIN	OPCL	trip origin parcel		20382	28676	20382	6401
	FHNTIN	OTAZ	trip origin zone		2327	1145	2327	1264
	FHNTIN	DPCL	trip dests parcel		28676	20382	6401	20382
	TOEXP	DTAZ	trip dest zone		1145	2327	1264	2327
		MODE	trip mode		3	3	4	4
		PATHTYPE	transit submode		1	1	1	1
		DORP	trip driver or passenger		1	1	1	2
		DEPTM	trip departure time (min after 3 am)		492	868	1182	1250
		ARRTM	trip arrival time (min after 3 am)		521	896	1190	1258
		ENDACTTM	trip dest activity end time		1047	1361	1429	958
		TRAVTIME	network travel time, min (by sov)		29.07	28.34	8.433346895	8.433346895
		TRAVCOST	network travel time, min (by sov)		1.4892	1.4892	0.3190135	0.3190135
		TRAVDIST	network travel distance, miles (by sov)		12.41	12.41	2.658445833	2.658445833
		VOT	trip value of time (cents/minute)		50.69256829	50.69256829	40.02910927	40.02910927
		TREXPAC	trip expansion factor		1	1	1	1



# Model Results in Database



# Daysim Visualization





# Current Status

- Calibrated
- Sensitivity tests made:
  - Transit
    - Headway
    - Free for students
  - Parking
    - Capacity
    - Fare
  - Truck restriction/Truck routes
  - Land-use change
- Other policies tests

