

# TNMUG MPO Roundtable

7/15/2015

Knoxville Regional TPO Activities

**Knoxville Regional  
Transportation  
Planning Organization**

**TPO**

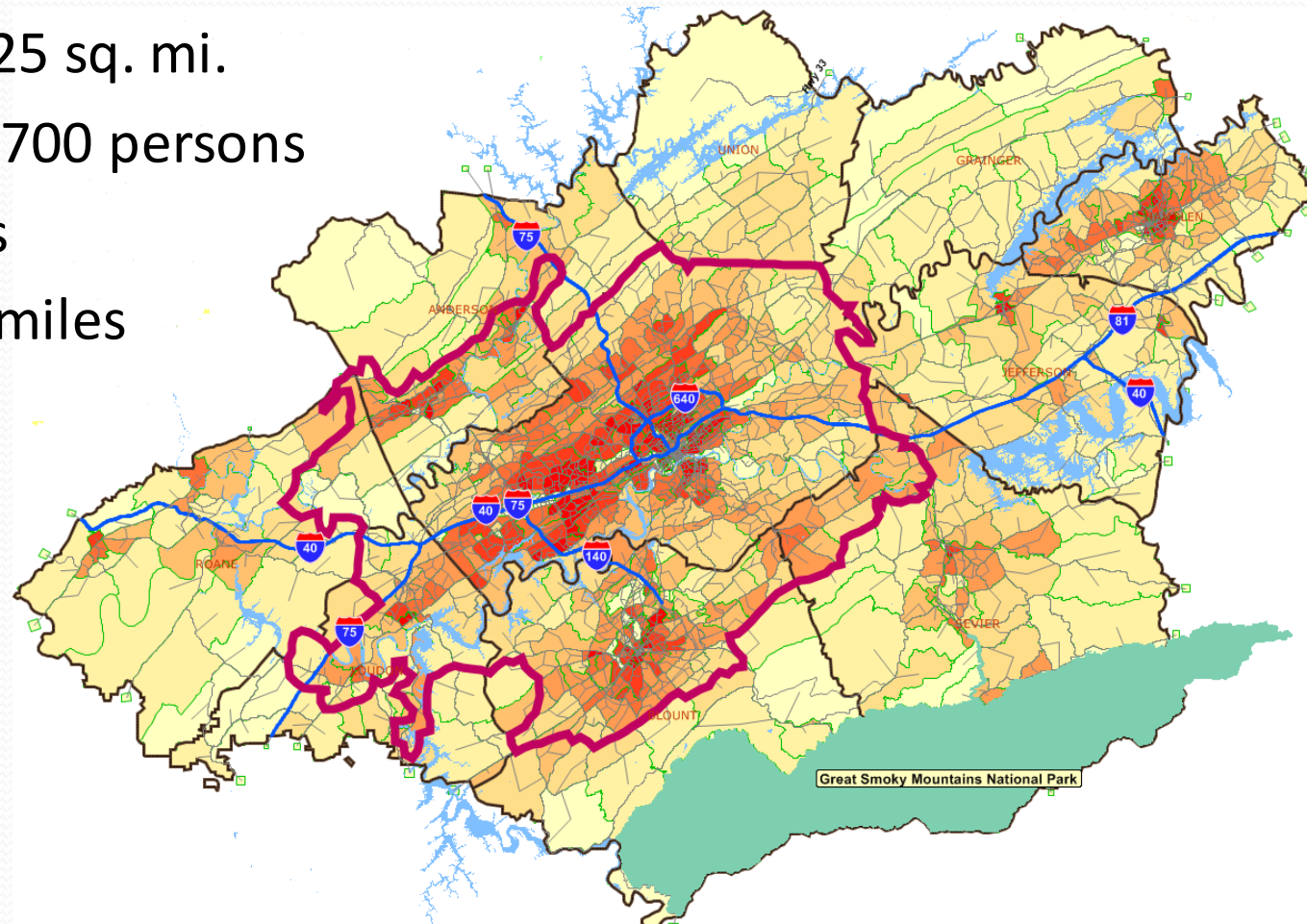


# Highlights

- Travel Model Overview
- PlanET Overview
- ET Index Demonstration

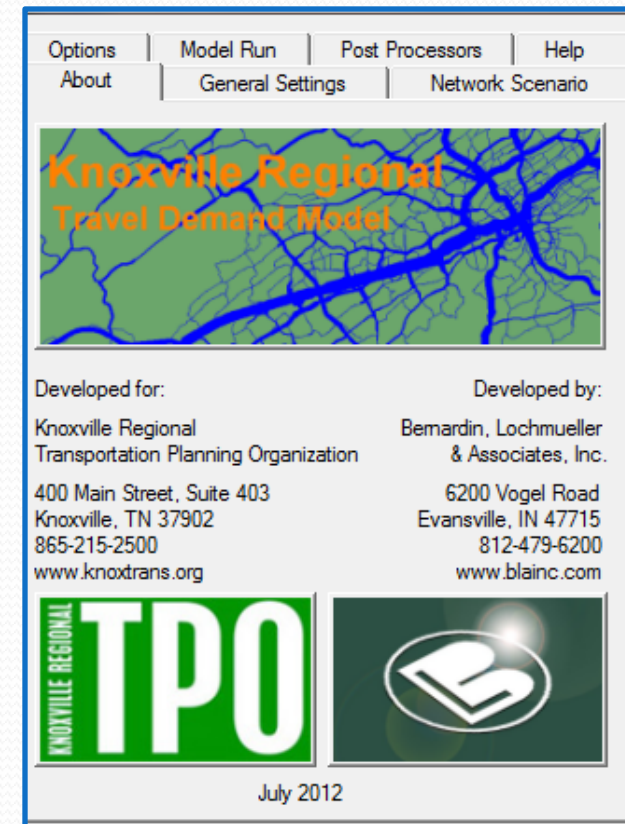
# Knoxville Regional Travel Model - Geography

- 10 counties— 3,725 sq. mi.
- Population – 978,700 persons
- TAZ – 1,108 zones
- Network – 3,000 miles



# Knoxville Regional Travel Model - Chronology

- **2000** – HH Travel Survey
- **2002** – New Trip Based Model
- **2005** – Model Peer Review
- **2007** – External Survey (Interstates)
- **2008** – HH Travel Survey (Expanded Area)
- **2009** – Hybrid Trip/Tour Based Model
- **2012** – Added Geography (LAMTPO), 2010 Base Year (Decennial Census Info)
- **2015** – Minor Update?



# Knoxville Regional Travel Model – Next Steps

- Long Range Plan 4-year Update Cycle – Next one due by June 2017
- Attempt to pull together large amount of data (most provided by TDOT) over next several months:
  - E-TRIMS
  - ATRI
  - Transearch
  - Traffic Counts
  - InfoUSA
  - AirSage



"After careful consideration of all 437 charts, graphs, and metrics, I've decided to throw up my hands, hit the liquor store, and get snocked. Who's with me?!"

# PlanET Overview

- HUD/EPA Sustainable Communities Grant
- 5 County MSA Area
- 3 Year Process with Major Outreach
- Outcomes Include:
  - PlanET Playbook
  - Regional Demonstration Projects
  - Livability Report Cards
  - Ongoing Performance Tracking



# PlanET Continuation Efforts – ET Index Demonstration

- PlanET Website -  
[www.planeasttn.org](http://www.planeasttn.org)
- ET Index Website -  
<http://www.etindex.org/>

